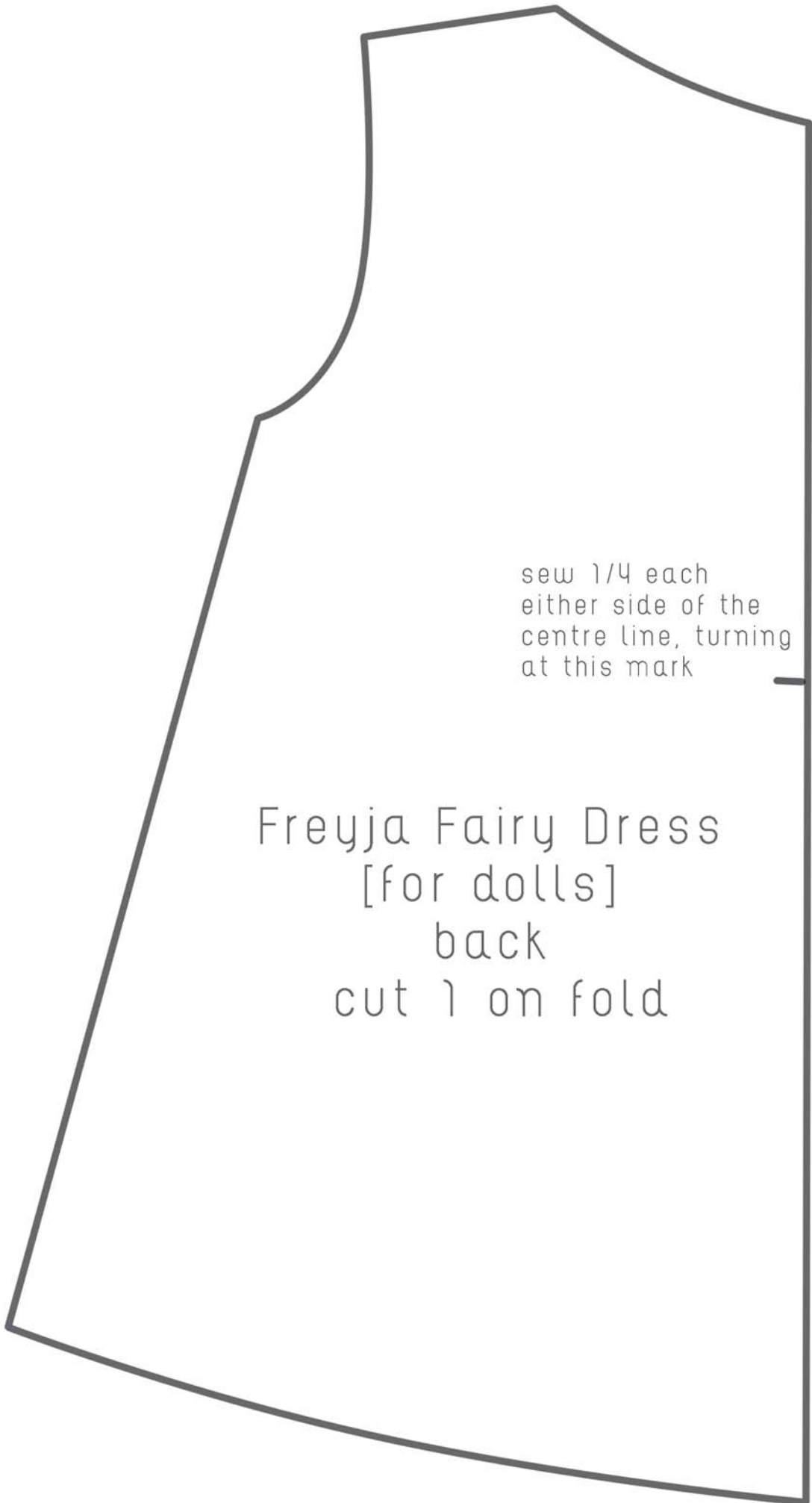




Freyja Fairy Dress
[for dolls]
sleeve
cut 2 on fold

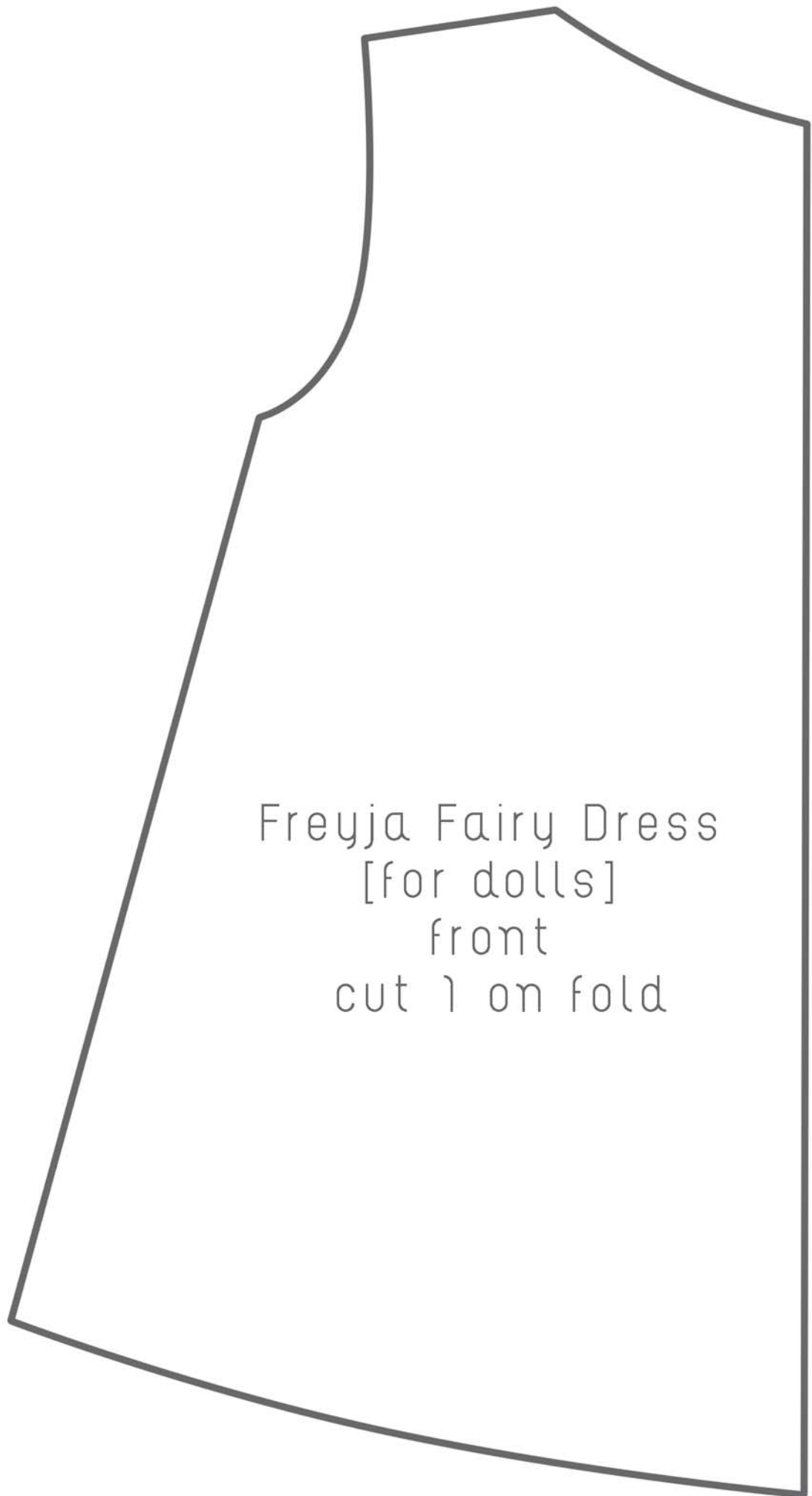
Freyja Fairy Dress
[for dolls]
wings
cut 1 on fold
from felt





sew 1/4 each
either side of the
centre line, turning
at this mark

Freyja Fairy Dress
[for dolls]
back
cut 1 on fold



Freyja Fairy Dress
[for dolls]
front
cut 1 on fold